

This quick reference guide is designed to make planning your business event as easy as possible. If you have any questions or would simply like some advice, please contact us, we're here to help. You can either call us direct on +44 (0)20 8990 1100 or email: mhrs.lhrhr.conferenceandevents@marriotthotels.com. For online information and to download printable floorplans, visit [Marriott.co.uk/meetingsandevents](http://Marriott.co.uk/meetingsandevents).

**PLANNING YOUR EVENT.**

	DIMENSIONS (METRES)			MAXIMUM NUMBER OF DELEGATES															
	NATURAL DAYLIGHT	AIR-CONDITIONING	WHEELCHAIR ACCESS	L	W	H	THEATRE STYLE (BACK PROJECTION)	THEATRE STYLE (FRONT PROJECTION)	BOARDROOM STYLE	U-SHAPE	CLASSROOM STYLE (BACK PROJECTION)	CLASSROOM STYLE (FRONT PROJECTION)	CABARET STYLE (BACK PROJECTION)	CABARET STYLE (FRONT PROJECTION)	RECEPTION	DINNER/DANCE	DINNER/DANCE (BACK PROJECTION)	DINNER	DINNER (BACK PROJECTION)
London Suite	-	✓	✓	30.45	13.6	3.97	400	480	-	-	260	300	224	240	480	330	200	380	280
County Hall Suite	-	✓	✓	13.6	23	3.97	200	360	-	65	180	200	160	180	360	200	-	220	100
County Hall Room	-	✓	✓	13.6	15.1	3.97	80	240	65	45	50	100	100	140	240	100	-	160	-
Marble Arch Suite	-	✓	✓	13.6	15	3.97	80	240	65	45	50	100	100	140	240	100	-	160	-
Regents Park Room	-	✓	✓	13.6	7.2	3.97	-	120	30	30	-	50	-	50	100	50	-	80	-
Marble Arch Room	-	✓	✓	13.6	7.55	3.97	-	130	30	30	-	50	-	50	100	50	-	80	-
Breadsall Priory Room	✓	✓	✓	6.9	7.5	2.37	-	-	16	-	-	-	-	-	-	-	-	16	-
Dalmahoy Suite	✓	✓	✓	6.9	7.5	2.37	-	35	15	20	-	18	-	24	40	-	-	30	-
Dalmahoy Room	✓	✓	✓	6.9	3.6	2.37	-	15	10	9	-	8	-	-	-	-	-	-	-
Forest of Arden Room	✓	✓	✓	6.9	3.6	2.37	-	15	10	9	-	8	-	-	-	-	-	-	-
Goodwood Park Suite	✓	✓	✓	6.9	11.4	2.37	-	80	35	45	-	48	-	24	100	-	-	80	-
Goodwood Park Room	✓	✓	✓	6.9	3.6	2.37	-	15	10	9	-	8	-	-	-	-	-	10	-
Goodwood Jr Suite	-	✓	✓	6.9	15.3	2.37	-	35	15	15	-	18	-	24	40	-	-	30	-
Hanbury Manor Room	✓	✓	✓	6.9	3.6	2.37	-	15	10	9	-	8	-	-	-	-	-	10	-
Hollins Hall Room	✓	✓	✓	6.9	3.6	2.37	-	15	10	9	-	8	-	-	-	-	-	10	-
Mean Valley Room	✓	✓	✓	6.9	3.6	2.37	-	15	10	9	-	8	-	-	-	-	-	10	-
Hanbury Manor Suite	✓	✓	✓	6.9	7.5	2.37	-	70	25	30	-	32	-	42	65	-	-	50	-
Hollins Hall Suite	✓	✓	✓	6.9	7.5	2.37	-	35	15	15	-	18	-	24	40	-	-	30	-
Tudor Park Room	-	✓	✓	8.88	6.9	2.67	-	30	18	18	-	16	-	21	40	-	-	30	-
Worsley Park Room	-	✓	✓	8.88	7.5	2.67	-	40	20	24	-	20	-	24	40	-	-	30	-
Tudor Park Suite	-	✓	✓	8.88	14.5	2.67	-	80	24	30	-	40	-	35	100	50	-	70	-
Sprowston Manor Room	-	✓	✓	6.9	3.6	2.37	-	-	8	-	-	8	-	-	-	-	-	-	-
St. Pierre Executive Boardroom	-	✓	✓	7.6	6.2	2.6	-	-	12	-	-	-	-	-	-	-	-	12	-
Kensington Room	-	✓	✓	5.86	2.95	2.33	-	-	6	-	-	-	-	-	-	-	-	6	-

**QUICK REFERENCE GUIDE**

NO. OF FLOORS	TOTAL NO. OF BEDROOMS	NON-SMOKING BEDROOMS	SUITES	ACCESSIBLE BEDROOMS	MARRIOTT COMMUNICATION SOLUTIONS AT THIS HOTEL	THE MARRIOTT BEDROOM (REFER TO HOTEL BROCHURE)	AIR-CONDITIONING IN BEDROOM	INTERNET ACCESS IN BEDROOM	MINI BAR IN BEDROOM	IN-ROOM SAFE	24-HR ROOM SERVICE	LAUNDRY SERVICE	SAFE DEPOSIT AT RECEPTION	SECRETARIAL SERVICES	BUSINESS CENTRE	EXECUTIVE LOUNGE	GIFT SHOP	SHOE SHINE IN PUBLIC AREAS	VENDING MACHINES IN PUBLIC AREAS	ICE MACHINES IN PUBLIC AREAS	VALET PARKING	CONCIERGE	ON-SITE CAR PARKING	FREE CAR PARKING	NUMBER OF PARKING SPACES
5	393	363	2	20	✓	✓	✓	✓	✓	✓	✓	✓	✓	✓	✓	✓	✓	✓	✓	✓	✓	✓	✓	✓	280

**RESTAURANTS AND LOUNGES**

Allie's American Grille  
Tuscany Ristorante  
Costa Coffee  
BarHemia  
Atrium Lounge

**MARRIOTT LEISURE CLUB**

Complimentary: Indoor heated swimming pool, fully equipped gymnasium, steam room, spa bath and sauna.  
Supplementary: Solarium and aromatherapy massage.

**PLACES TO SEE / THINGS TO DO**

Windsor Castle  
Legoland Windsor  
Ascot  
Kew Gardens  
Hampton Court  
City of London  
Houses of Parliament  
Buckingham Palace  
London Eye

**LONDON HEATHROW MARRIOTT HOTEL**

Bath Road, Harlington, Hayes, UB3 5AN

Tel 44 (0)208 990 1100

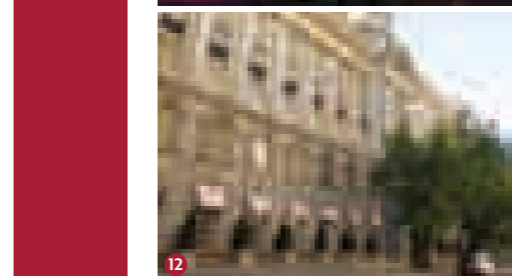
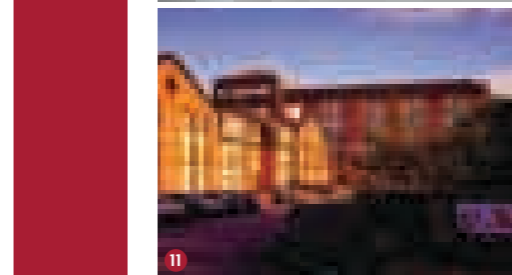
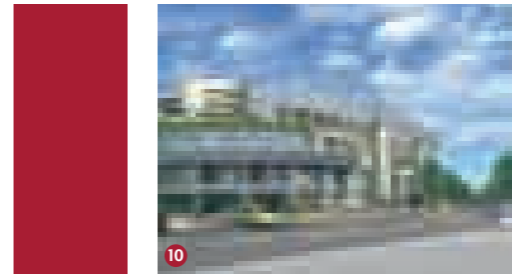
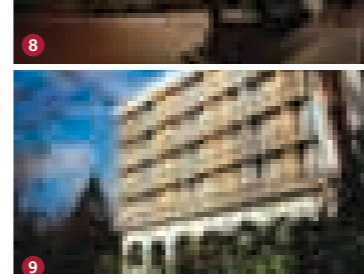
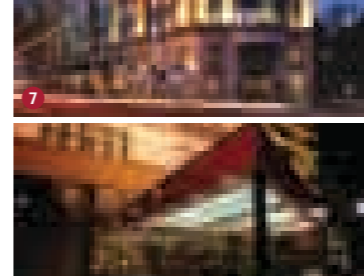
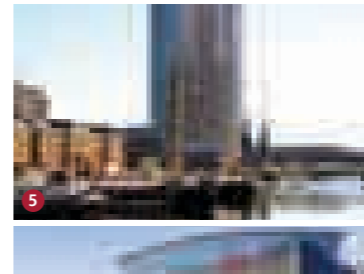
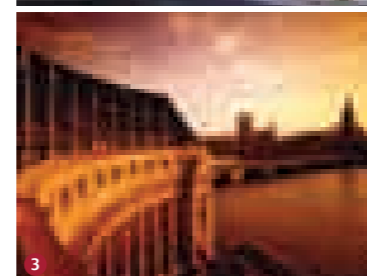
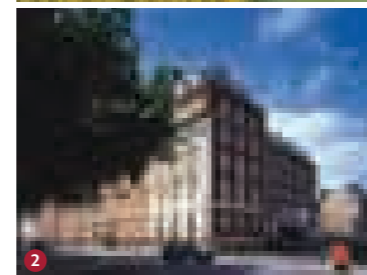
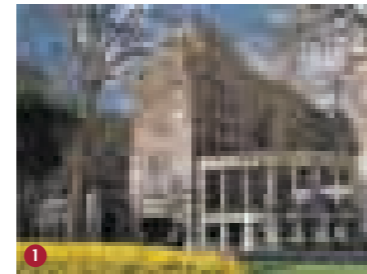
Guest Fax 44 (0)208 990 1110

Conference/Sales Fax 44 (0)208 990 1157

LondonHeathrowMarriott.co.uk

**ADDITIONAL MARRIOTT HOTELS**

- |   |  |   |  |
|---|--|---|--|
| 1 Grosvenor House, A JW Marriott Hotel *****<br>Tel (0)20 7499 6363   | 5 London Marriott Hotel West India Quay *****<br>Tel (0)20 7093 1000 | 9 London Marriott Hotel Regents Park ****<br>Tel (0)20 7722 7711  | 13 Renaissance London Heathrow Hotel ****<br>Tel (0)20 8897 6363 |
| 2 London Marriott Hotel Grosvenor Square *****<br>Tel (0)20 7493 1232 | 6 London Marriott Hotel Kensington ****<br>Tel (0)20 7973 1000       | 10 London Marriott Hotel Twickenham ****<br>Tel (0)20 8891 8200   |  |
| 3 London Marriott Hotel County Hall *****<br>Tel (0)20 7928 5200      | 7 London Marriott Hotel Maida Vale ****<br>Tel (0)20 7543 6000       | 11 Heathrow/Windsor Marriott Hotel ****<br>Tel (0)17 5354 4244    |  |
| 4 London Marriott Hotel Park Lane *****<br>Tel (0)20 7493 7000        | 8 London Marriott Hotel Marble Arch ****<br>Tel (0)20 7723 1277      | 12 Renaissance London Chancery Court *****<br>Tel (0)20 7829 9888 |  |



**FOR A PREMIUM EXPERIENCE AND A SUCCESSFUL EVENT.**

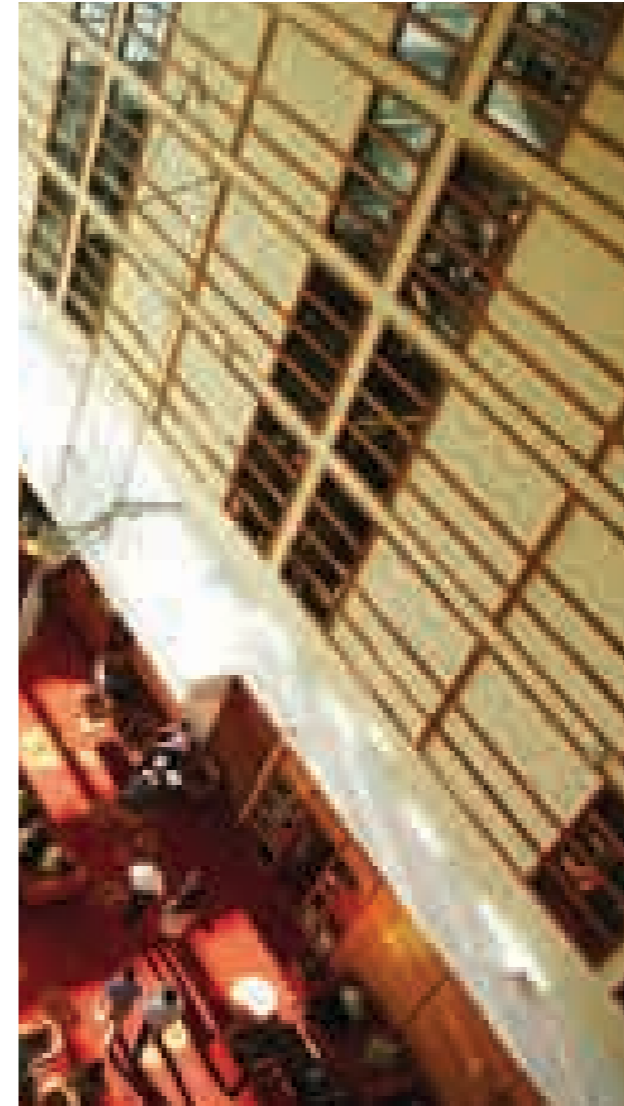


- 2-3 Getting down to business
- 4-7 Meetings and Events
- 8-9 Restaurant and Bars
- 10-11 Dining at the London Heathrow Marriott
- 12-13 Your Marriott Guestroom
- 14 Leisure Club
- 15 Executive Lounge
- 16-20 Planning your event

**CONTENTS.**

**THE PLACE TO MEET.**

The London Heathrow Marriott Hotel offers warm hospitality in a premium location, just minutes from Heathrow Airport. Here, contemporary design blends with thoughtful service, providing a haven for clear thinking and relaxation. We're convenient for central London, close to Hayes Railway Station and just 5 minutes from the M4 and M25 motorways.

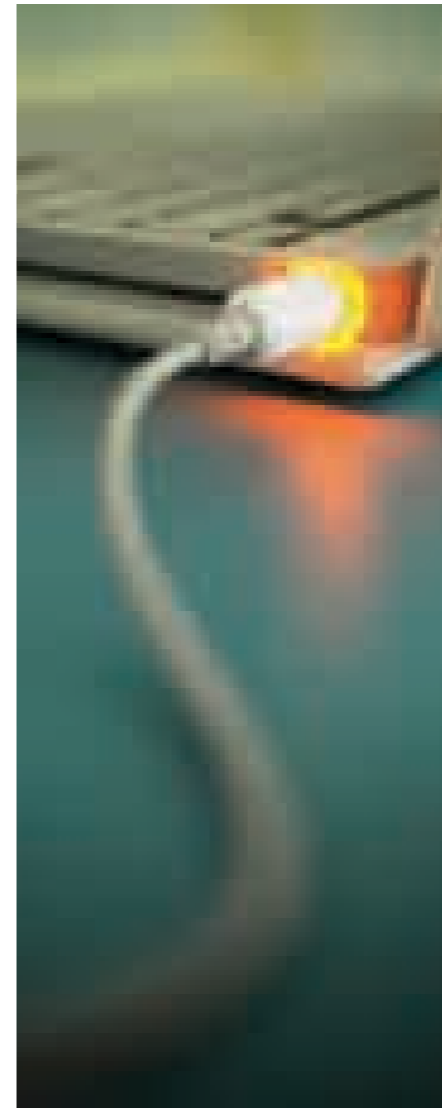


**PERFECT PLACE FOR  
THE PERFECT DAY.**

It's our goal to make your occasion perfect, in every way. From day one you'll be given a dedicated **Event Manager** to help with all your planning. Our **Red Jacket Banqueting Organisers** will take care of every detail on the day – you needn't lift a finger. And to make sure we all share the same goals, we'll agree your **Three Gold Keys** with you – these are your key objectives that will ensure your event is a success.



St. Pierre Executive Boardroom

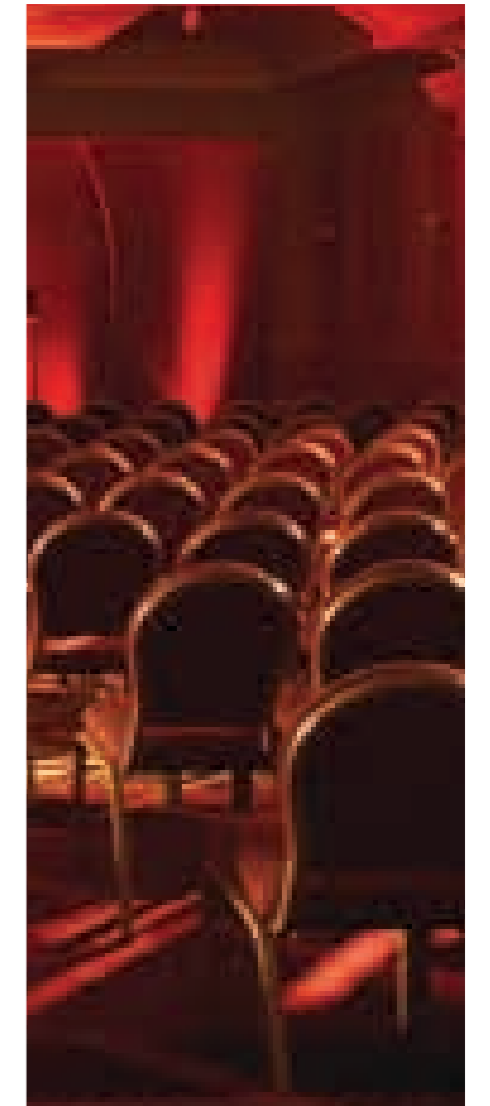


Hanbury Manor Suite

High-speed wired and wireless internet access. Options for video conferencing, laptop hire and even lighting and stage design. The technology to bring your event to life is here at your request. And to make your event a smooth-running success, a dedicated support team with one point of contact can take away the technical strain.

**CHALLENGE MINDS,  
INSPIRE ACTION.**

Make that dream event a reality. Here careful attention to detail meets the highest quality service, producing a unique ambiance designed to inspire creative thinking, focus and purpose. The theme continues throughout, with 15 state-of-the-art conference suites including our 500 square metre Exhibition Area.



Our largest conference suite can comfortably accommodate up to 480 guests, and can be adapted for a wide range of uses. Inspire colleagues with a team-building event. Go global with a high-tech conference. Give awards ceremonies a sense of prestige. We can give your event an added edge of sophistication.

## WORLD-CLASS CONNECTIONS

Outstanding business facilities, high-speed internet access, audio-visual equipment and a concierge service are available for every event. With our experienced service and expert support, you're free to focus on the things that truly matter – honing your business strategy, making crucial marketing decisions, meeting new clients or simply celebrating recent achievements.



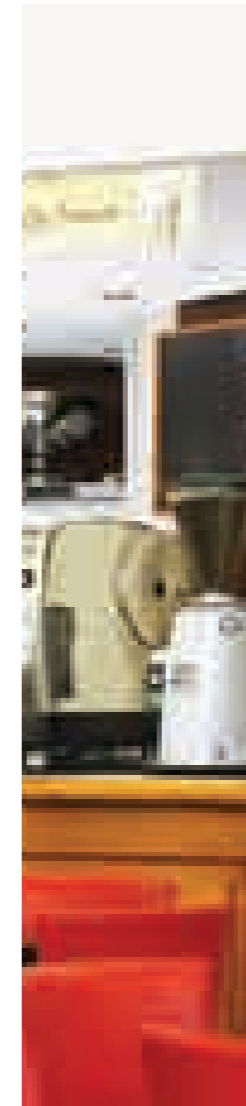
Breadsall Priory Room



Try our unique custom-built web page for that meeting with a difference. Offered as a complimentary service, we can create a personalised web site, adding links, attachments and agendas for all your delegates to view in one place. They can even book their bedroom at the same time.

**A TASTE OF CITY STYLE.**

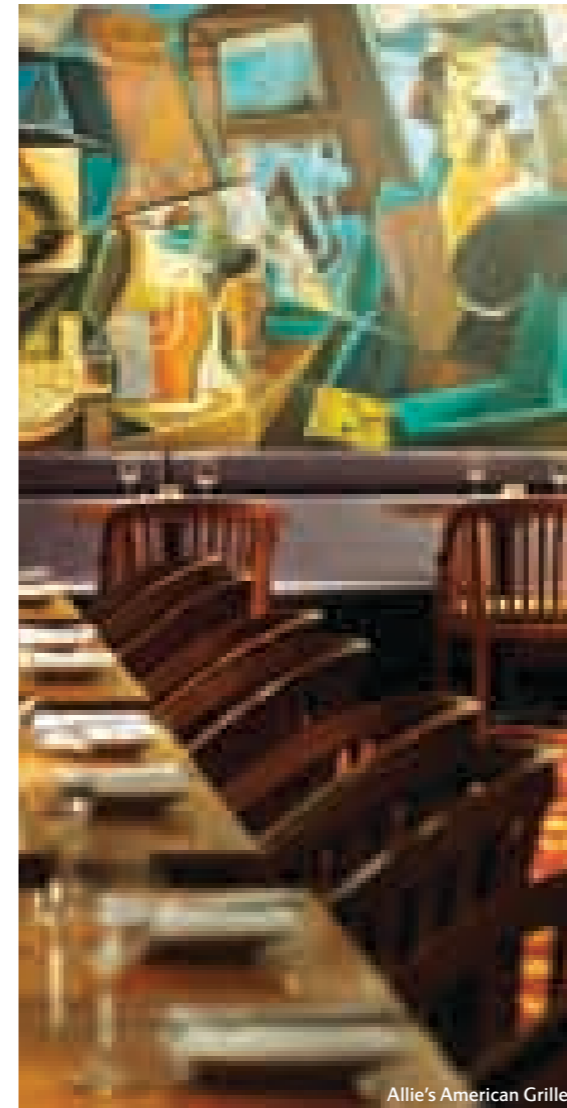
Relax. Unwind. Make your choice. For a relaxing evening join us in BarHemia and choose from a selection of continental beers, world wines and light meals. Our Atrium Lounge serves drinks and sandwiches throughout the day and is ideal for an impromptu meeting or relaxing get together. It's also the perfect place to meet for a pre or post dinner cocktail. For your favourite coffee fix or that panini to go, Costa Coffee is available from early morning.



**FOOD WITH FLAIR.**

We offer a choice of restaurants to suit the mood and impress the most discerning of palates. Our Tuscany Ristorante elegantly combines authentic Tuscan cuisine with a sophisticated urban ambiance, whilst Allie's American Grille offers a wide range of light and hearty American meals within a modern brasserie setting.

To complement your meal, choose from our diverse selection of vintage champagnes, world-famous names from Europe, including an extensive list of Italian wines, and carefully selected New World flavours. To enhance your event, we'll design working lunches, creative buffets and mouth-watering menus to satisfy every taste and appetite.



Allie's American Grille



Tuscany Ristorante

**REVIVE YOUR SENSES.**

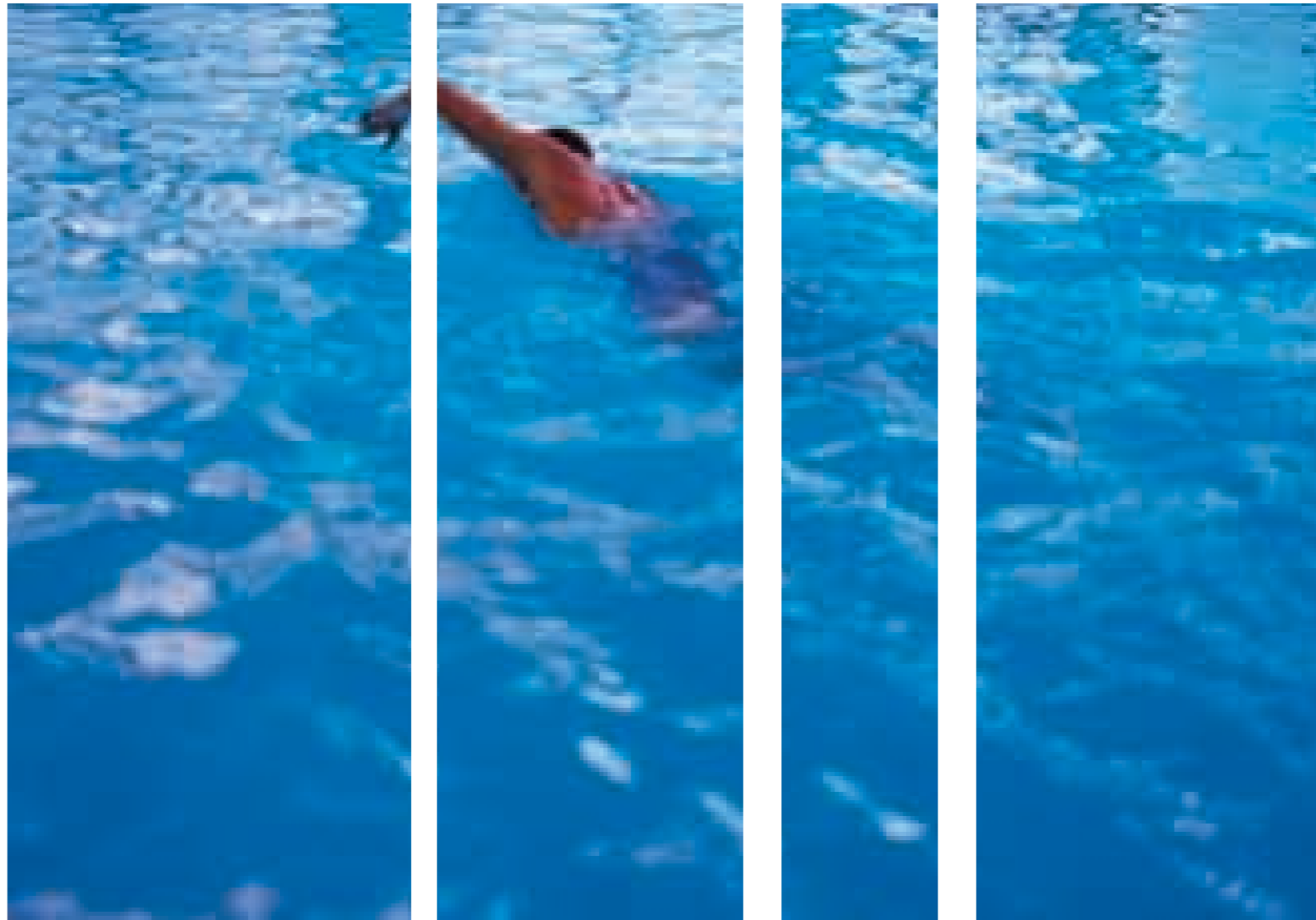
Our 393 bedrooms, suites and executive rooms are lovingly designed to blend comfort with those essential modern touches. Each has an en-suite bathroom, air-conditioning, mini-bar, spacious work areas and 24-hour room service. Plus Sky TV, high-speed internet access, in-room laptop sized safes, headboards with reading lights and Marriott's blissful cotton-rich luxury bedding.



Choose to upgrade your room, and take advantage of our two suites with either separate lounge or combined lounge and dining area, or one of our 113 spacious executive rooms which also offer exclusive access to our Executive Lounge.

**FEEL RELAXED  
AND INSPIRED.**

Work up a sweat or kick back and relax in our state-of-the-art Leisure Club – free to guests. We’ve a heated indoor swimming pool. A fully equipped gymnasium featuring cardiovascular equipment and free weights. A relaxing sauna, steam room and spa bath. Even a massage service to take away the aches and pains. We’ve all you could need to stay looking good and feeling your best.



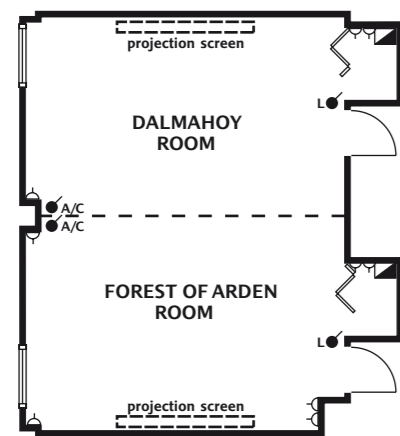
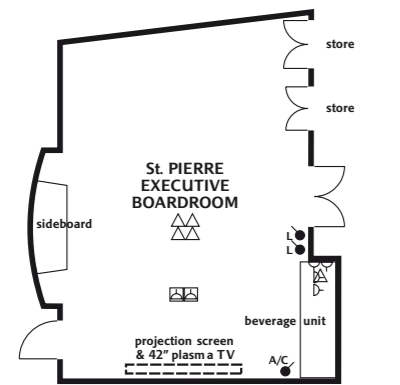
Get away from it all in our quiet and comfortable Executive Lounge, complete with high-speed internet access, continental breakfast, snacks and non-alcoholic drinks. Business has never been so relaxing.



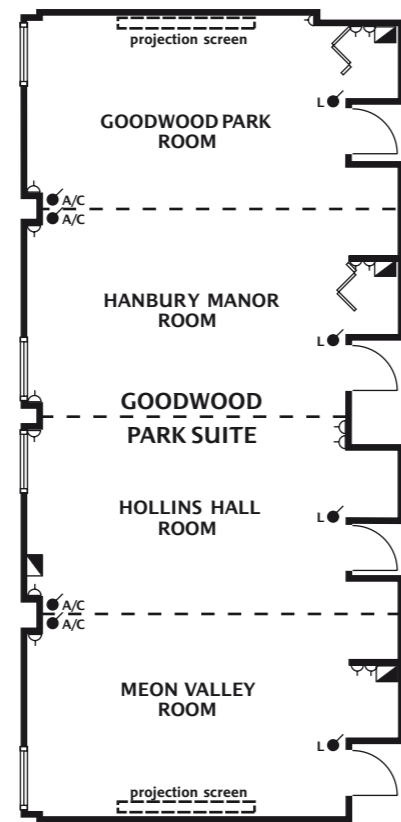
Executive Lounge

**ST. PIERRE EXECUTIVE BOARDROOM.**

Located on the ground floor, the St. Pierre Executive Boardroom takes up to 12 people. This smart room with its modern audio-visual equipment, LCD projector and plasma screen also has power and data points installed in the boardroom table, giving your meeting that professional edge.

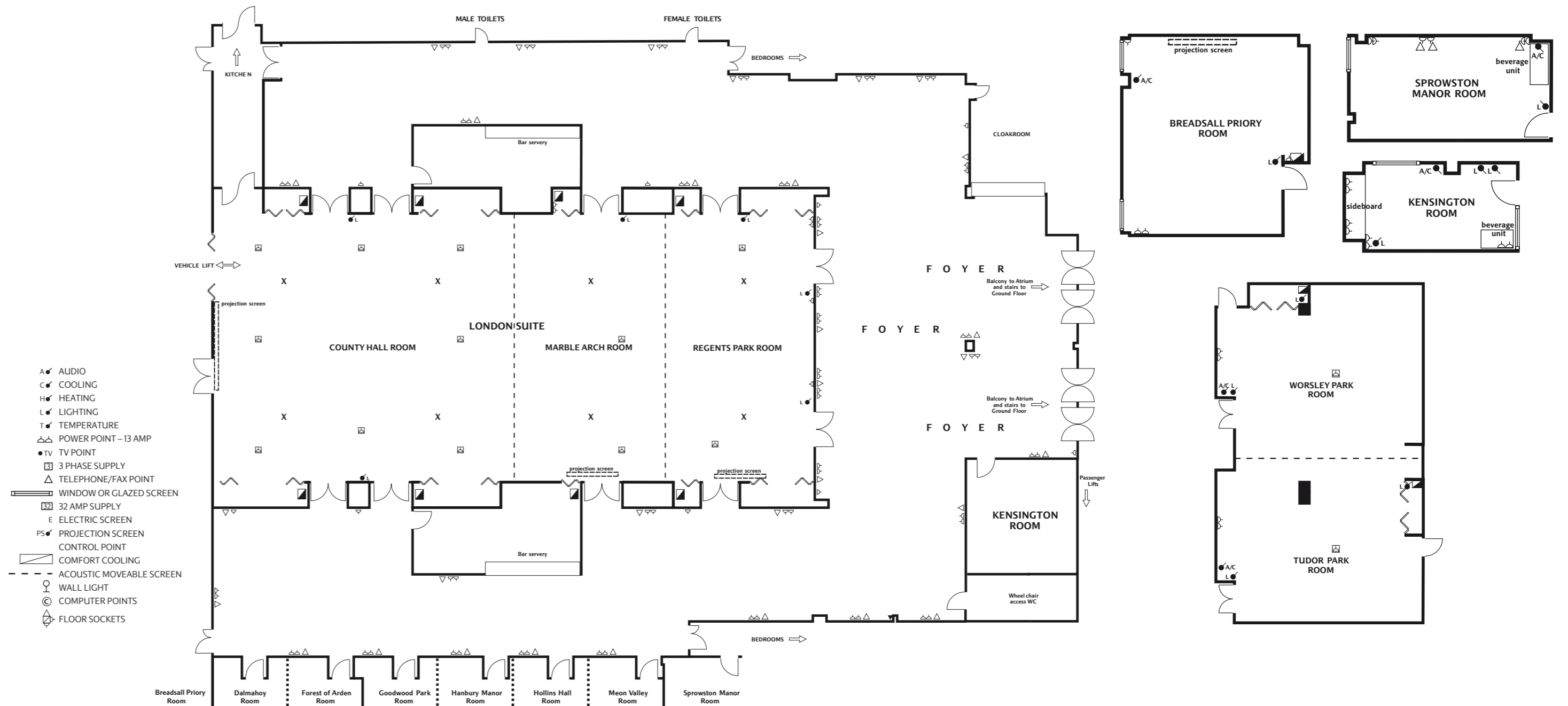


- A ✓ AUDIO
- C ✓ COOLING
- H ✓ HEATING
- L ✓ LIGHTING
- T ✓ TEMPERATURE
- △ POWER POINT - 13 AMP
- TV POINT
- ⊞ 3 PHASE SUPPLY
- △ TELEPHONE/FAX POINT
- ▬ WINDOW OR GLAZED SCREEN
- ⊞ 32 AMP SUPPLY
- E ELECTRIC SCREEN
- PS ✓ PROJECTION SCREEN
- CONTROL POINT
- ▬ COMFORT COOLING
- - - ACUSTIC MOVEABLE SCREEN
- WALL LIGHT
- ⊙ COMPUTER POINTS
- ⊕ FLOOR SOCKETS



**THE LONDON SUITE.**

Located on the first floor, the London Suite is the perfect function space for conferences, private dining or even unique events such as car launches. Equipped with 3-phase power, ceiling suspension points, flexible lighting and a full size cargo lift, this room provides a solution for all your theming and audio-visual requirements. Being made up of 3 large sections, the County Hall Room, Marble Arch Room and Regents Park Room, it allows various combinations to suit the size of your event. The dedicated banqueting kitchen is located nearby and gives direct access to all the rooms on the first floor.



- A ✓ AUDIO
- C ✓ COOLING
- H ✓ HEATING
- L ✓ LIGHTING
- T ✓ TEMPERATURE
- △ POWER POINT - 13 AMP
- TV POINT
- ⊞ 3 PHASE SUPPLY
- △ TELEPHONE/FAX POINT
- ▬ WINDOW OR GLAZED SCREEN
- ⊞ 32 AMP SUPPLY
- E ELECTRIC SCREEN
- PS ✓ PROJECTION SCREEN
- CONTROL POINT
- ▬ COMFORT COOLING
- - - ACUSTIC MOVEABLE SCREEN
- WALL LIGHT
- ⊙ COMPUTER POINTS
- ⊕ FLOOR SOCKETS